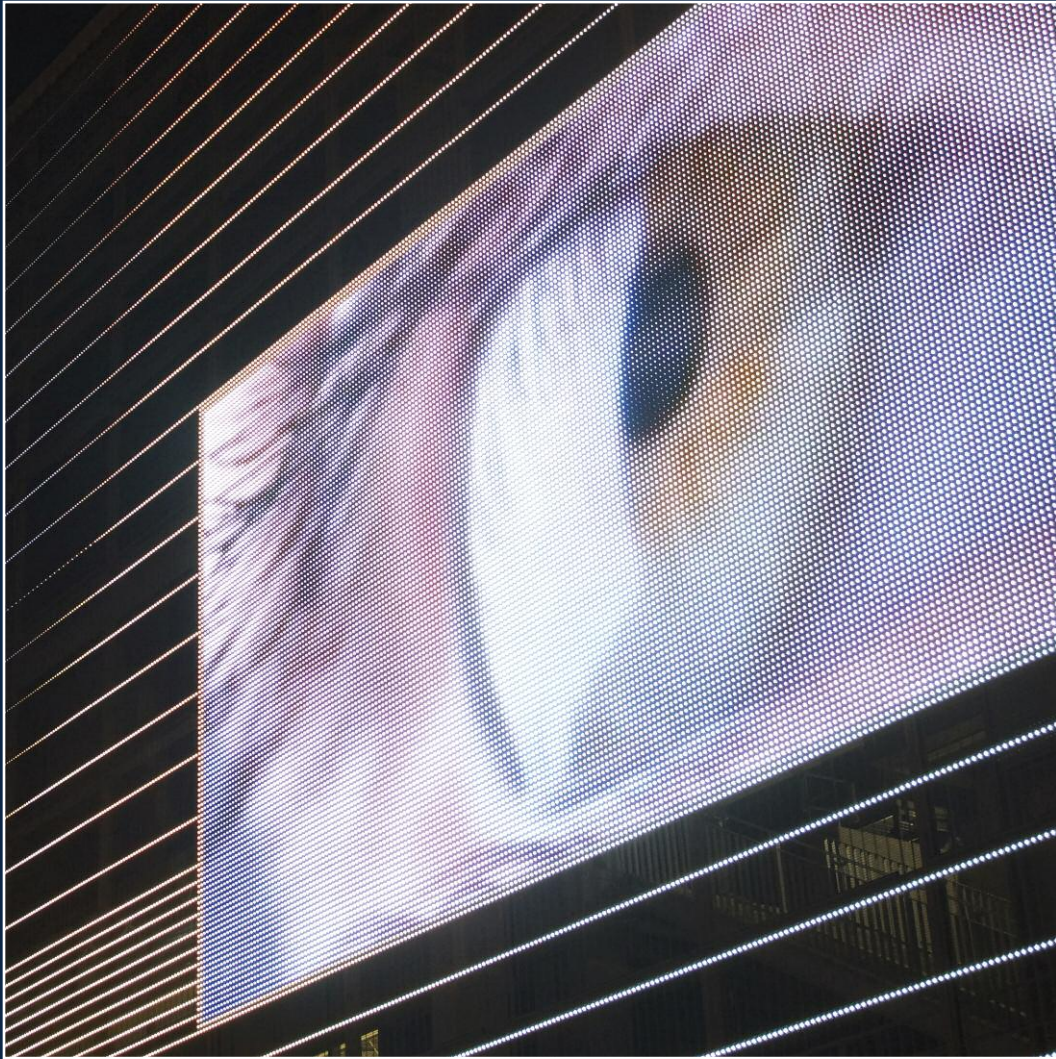


**HAVER & BOECKER**



**DIE DRAHTWEBER**



**IMAGIC WEAVE®**  
**TRANSPARENT MEDIA FAÇADES**

**HAVER & BOECKER**

# TRANSPARENT MEDIA FAÇADES

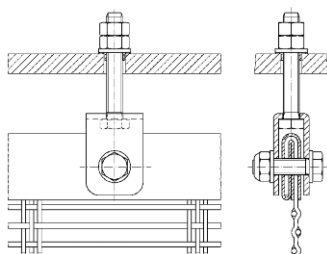
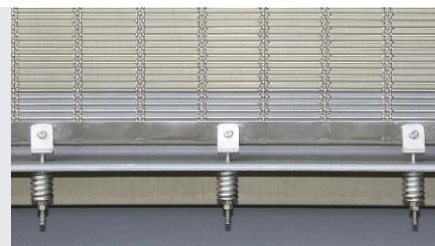


IMAGIC WEAVE®, a combination of Haver & Boecker architectural wire mesh and LED Technology by Traxon Technologies, an Osram Business, enables to create individually programmable lighting effects in any colours including video presentations on a new or existing façade.

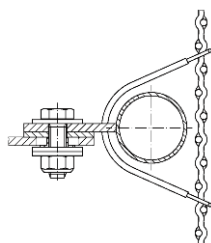
The types of wire mesh and cloth manufactured by Haver & Boecker for these applications are every bit as diverse as the architecture itself. Very different mesh designs with specific optical and lighting effects can be produced, depending on the warp and weft wires and mesh structure.

The colour layout of the mesh surface allows the design to be extended even further. For IMAGIC WEAVE® façades Haver & Boecker also offers architectural mesh developed for specific individual requirements in addition to standard specifications.

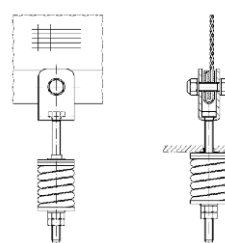
## Standard Mounting System



Top mounting



Intermediate mounting



Bottom mounting

## Attachment of LED-Profiles to the Mesh

By attaching the LED-profiles to the reverse side of the wire mesh the homogenous look of the façade is maintained at all times, even when the LEDs are not in use.

### Advantages

- Easy to maintain
- Easy to retrofit

### Material

- Housing profiles and clips: stainless steel AISI 316



Top mounting with attached LED-profiles

## Flexible range of technical possibilities

With the flexibility of IMAGIC WEAVE® it is always possible to meet the main focus of a transparent media façade. If a full daylight solution is required the IMAGIC WEAVE® profiles with six THT LEDs per pixel are the most suitable solution.

Media façades with short viewing distances have a fantastic performance being equipped with IMAGIC WEAVE® profiles consisting of two SMT LEDs per pixel and a small pixel pitch (e.g. 40 mm).

For best possible energy efficiency the brightness of IMAGIC WEAVE® can be adapted to the ambient conditions automatically. Needless power consumption can be avoided.

An IMAGIC WEAVE® media façade appears as an elegant stainless steel mesh façade - even when no content is displayed. The homogenous look of the façade is maintained in case that the façade is partially used as media screen only or when different resolutions are combined, as the slim LED-profiles installed at

the backside of the mesh are nearly invisible from the front.

The combination of chosen meshtype and LED pixel pitch enables to determine easily the transparency.

The IMAGIC WEAVE® system works within a wide operating temperature range from -30°C to +60°C, has an outdoor proofed IP67 rating and will be supplied with extensive service from Traxon Technologies and Haver & Boecker.

## Video Server: Lighting Control Engine fx (LCEfx)

The Lighting Control Engine fx (LCEfx) as a central control unit orchestrates all devices and fixtures within a project. Additional video interfaces support the media sequencing with Emotion FX. With the ability to output DMX/RDM, e:net and other protocols such as Art-Net and KiNET and the capability to integrate various audio/video, external triggerin and other desired devices and content, the LCEfx is

the ultimate solution for video to LED matrix mapping and media sequencing.

A built-in touch screen monitor housed on the front panel of the attractive, durable aluminium casing provides user interaction with custom graphic user interface designs. The e:cue Lighting Application Suite is a collection of software applications used to program the most



creative lighting designs.

It includes innovative and intuitive tools to design simple to complex lighting and video shows, visualization of the lighting installation and special triggering and automation features.

With the Mobile Action Pad app, the entire control solution can be operated via smart phone or Tablet PC – at any time and any location. It is for free available for iOS and Android devices.

## System Setup (example power supply indoor)



**Indoor**  
Control Room  
(Air-condition required)

19 inch rack  
mountable



Video-Server  
(Content)



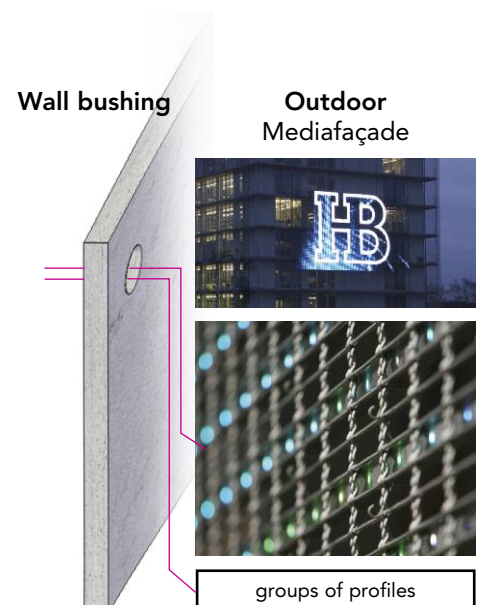
Video Converter

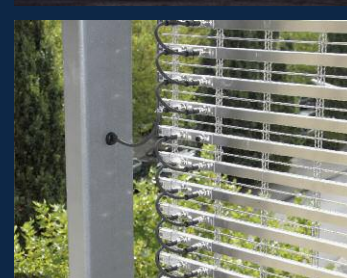
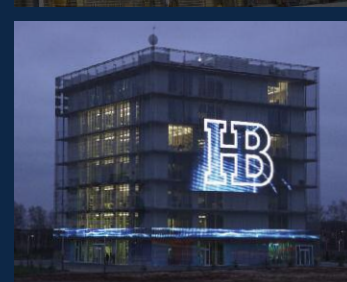
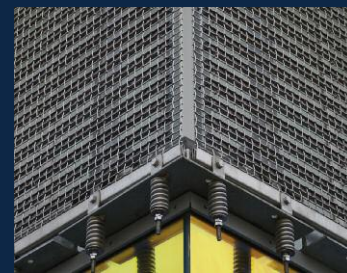
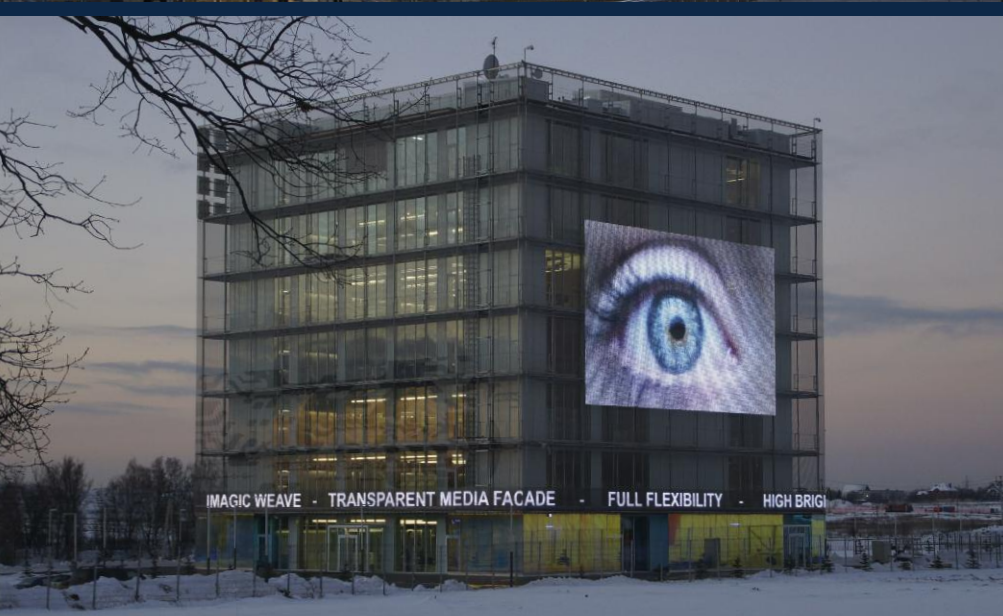


Power Supply



Power Supply





HAVER & BOECKER · Ennigerloher Straße 64 · 59302 OELDE · Germany  
 Phone: +49 (0) 2522 30-684 Fax: +49 (0) 2522 30-767  
 E-mail: [info@imagicweave.com](mailto:info@imagicweave.com)  
 Internet: [www.imagicweave.com](http://www.imagicweave.com)  
 Traxon Technologies Ltd., an OSRAM Business, Hong Kong  
 Internet: [www.traxontechnologies.com](http://www.traxontechnologies.com)

