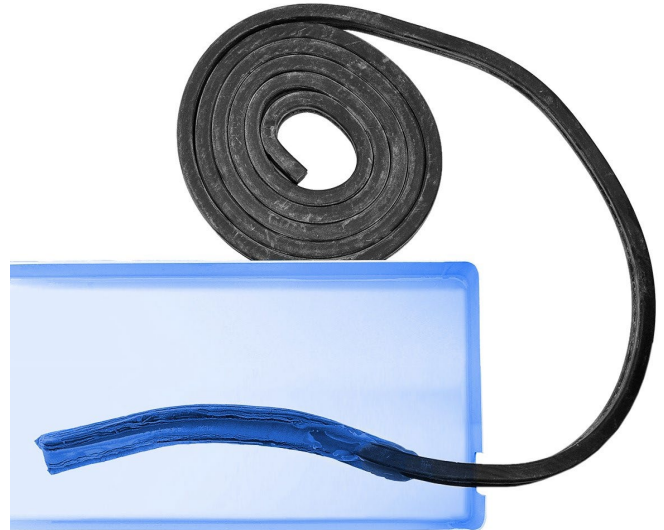


## BENFELT STRIP

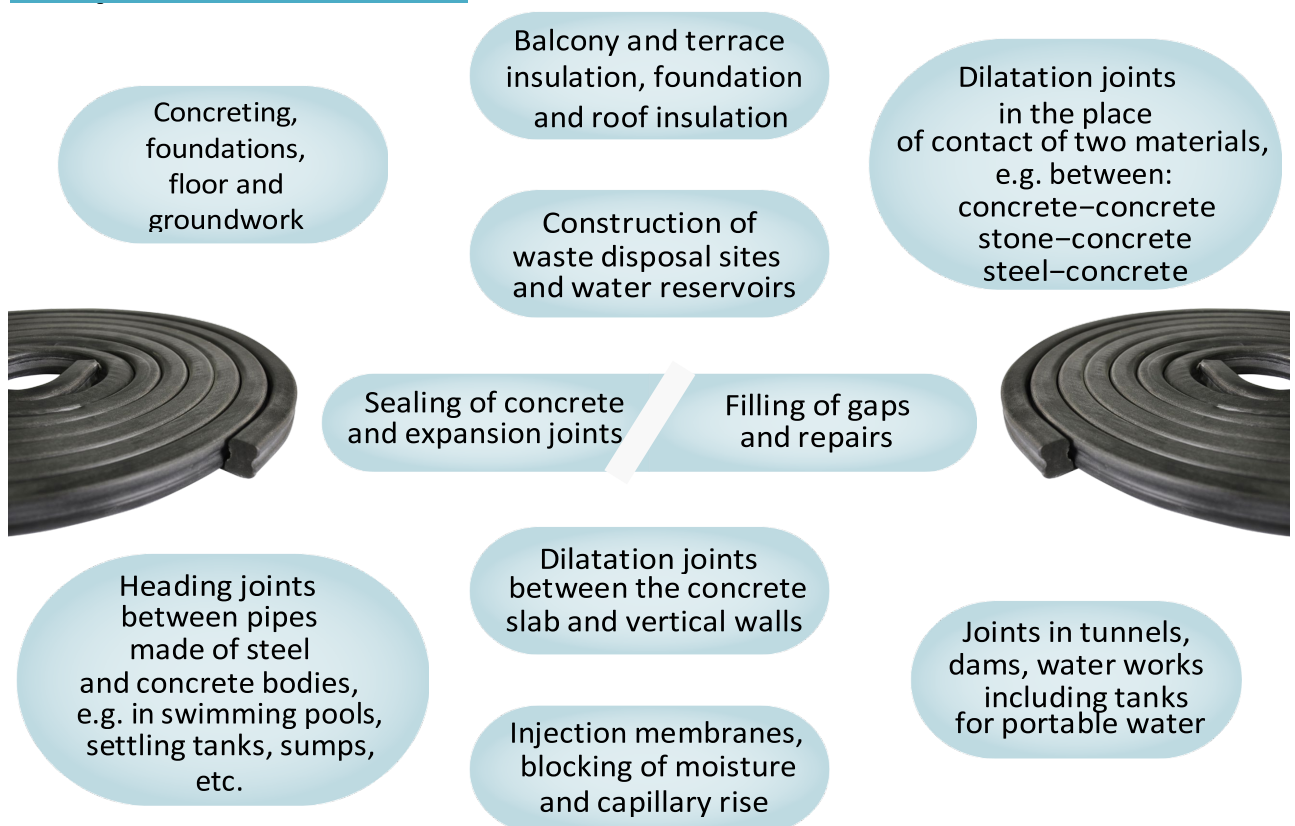
### Product description

BENFELT STRIP bentonite sealing tape is a bentonite-based elastic section which was specially developed for sealing the water-resistant joints, dilatation joints, dividing gaps etc.

Thanks to its chemical composition BENFELT STRIP has the power to expand at contact with water and increase its volume up to 200 %. That creates safe protection against water action, regardless of pressure.



### The product is used for

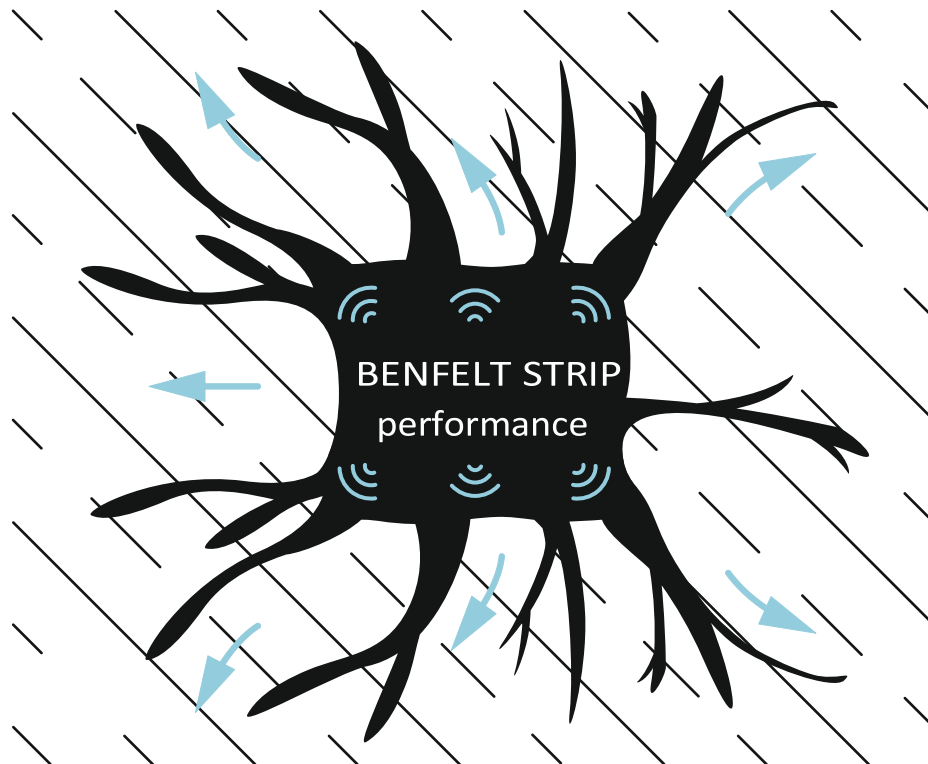


## Installation

Do not apply BENFELT STRIP onto surfaces with standing water. It is required that the water is completely removed from the surface.

Place BENFELT STRIP onto the bottom of concrete area to ensure a perfect contact with the subgrade, cover with BENFELT RAIL and fasten with the steel nails in distances of approximately 25 cm. In order to eliminate roughness/unevenness of the concrete bottom area we recommend using a bonding and sealing product BENFELT PASTE. The concrete can be placed immediately after BENFELT STRIP application. The minimal thickness of concrete is 7 cm.

BENFELT STRIP is an indispensable part of GCL installation on any structure, but also in civil installations where we need to seal penetrations by GCL. BENFELT STRIP is the perfect solution to accurately and quickly seal all joints, bends and penetrations through the mat.

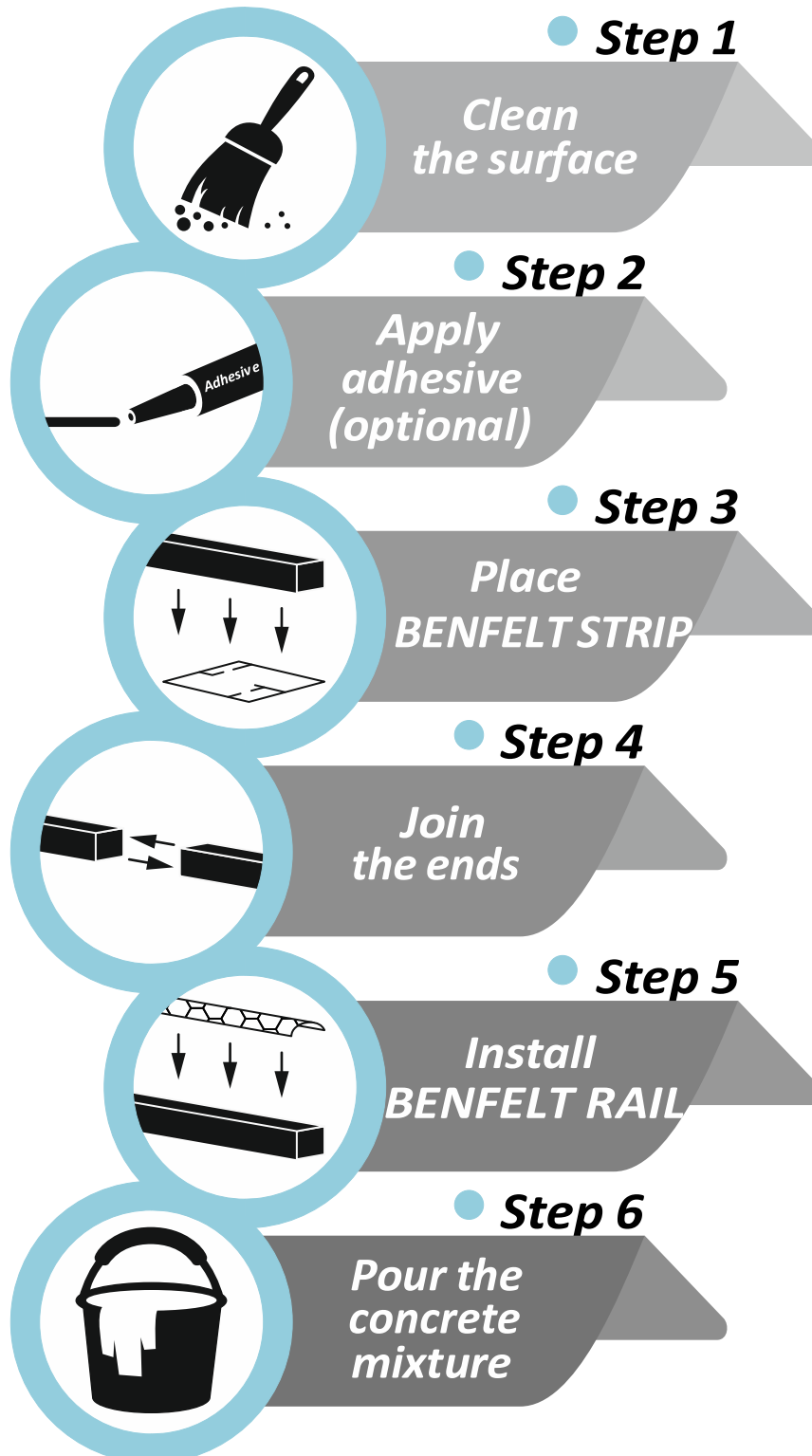


Some basic information to help you apply BENFELT STRIP correctly:

- Clean and pre-dry the BENFELT STRIP application site,
- Remove all contaminants such as dust, debris, rust and others,
- BENFELT STRIP can be laid in relatively damp locations, but avoid laying it in water,
- Apply BENFELT STRIP by gradual unrolling it in the concrete joint or penetration area you wish to seal,
- To ensure a continuous seal, butt the individual BENFELT STRIP sections together,
- At concrete joints, secure BENFELT STRIP with BENFELT RAIL to avoid its movement,
- BENFELT STRIP secured with a BENFELT RAIL shall be fixed to the structure with e.g. concrete nails,
- Make sure that BENFELT STRIP adheres to the subgrade over its entire surface,
- For installation on surfaces other than concrete (e.g. steel, plastic) use installation adhesive.

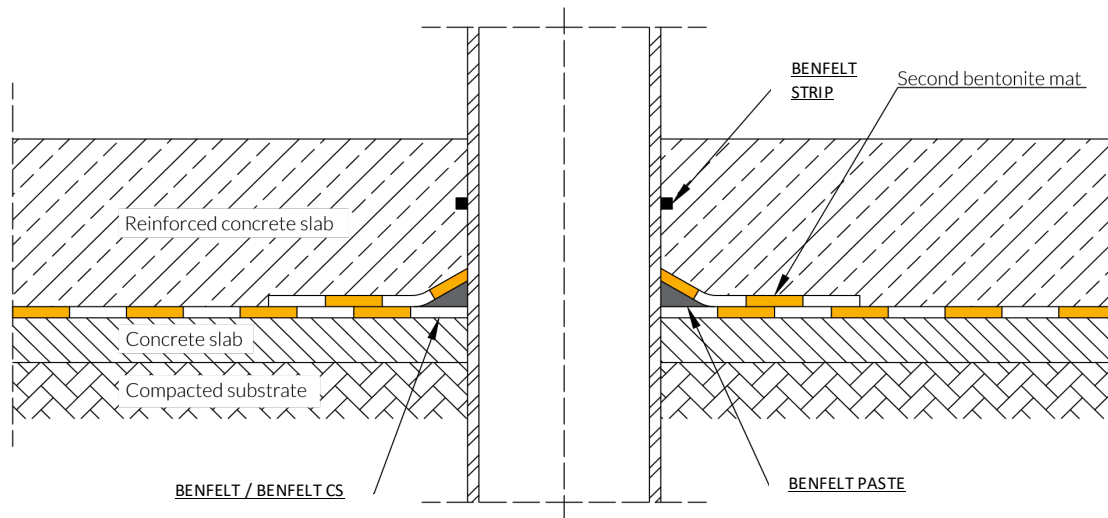


# Easy & Quick Installation



Assembly on selected example constructions:

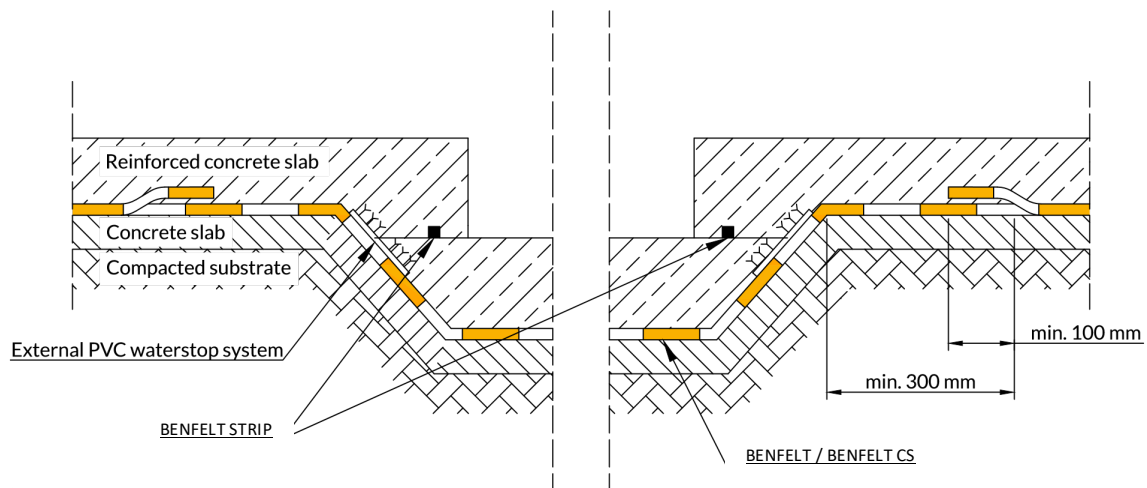
### Sealing on the installation pipe penetration through the foundation board



Notes:  
Details shown are typical illustrations only and not working drawings.

Following general guidelines, we lay BENFELT STRIP on the surface of the pipe before lining the reinforced concrete. BENFELT STRIP will ensure tightness at the penetration point.

### Insulation of the lift pit or board trim

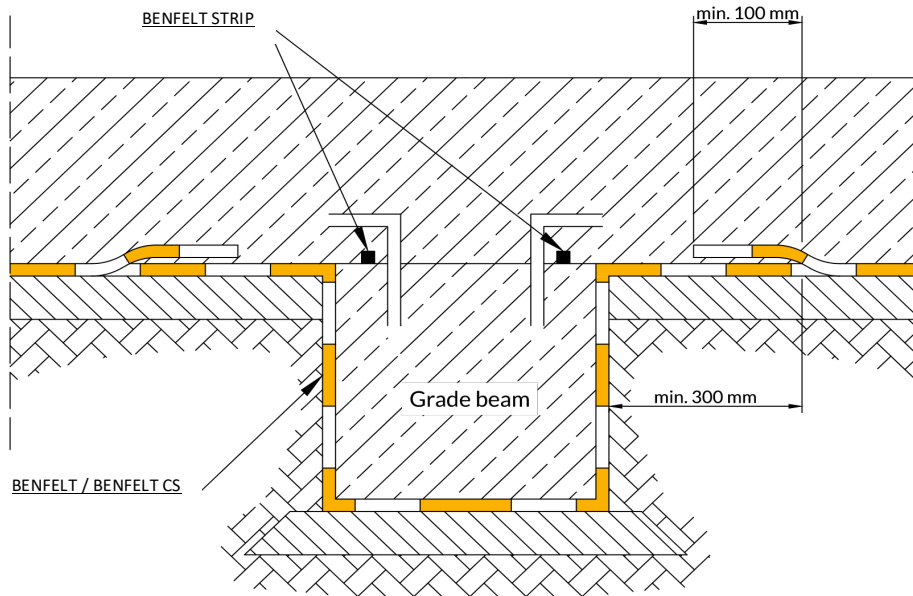


Notes:  
Details shown are typical illustrations only and not working drawings.

BENFELT STRIP stripes must be installed in all construction joints of the concrete works. In case of water pressing, in addition to BENFELT STRIP tape, external polymer sealing tapes or injection hoses are often used. If the insulation route goes through vertical corners (inner and outer), the material must be set in such a manner that the vertical edge of the belt is located at the distance of at least 30 cm from the corner.



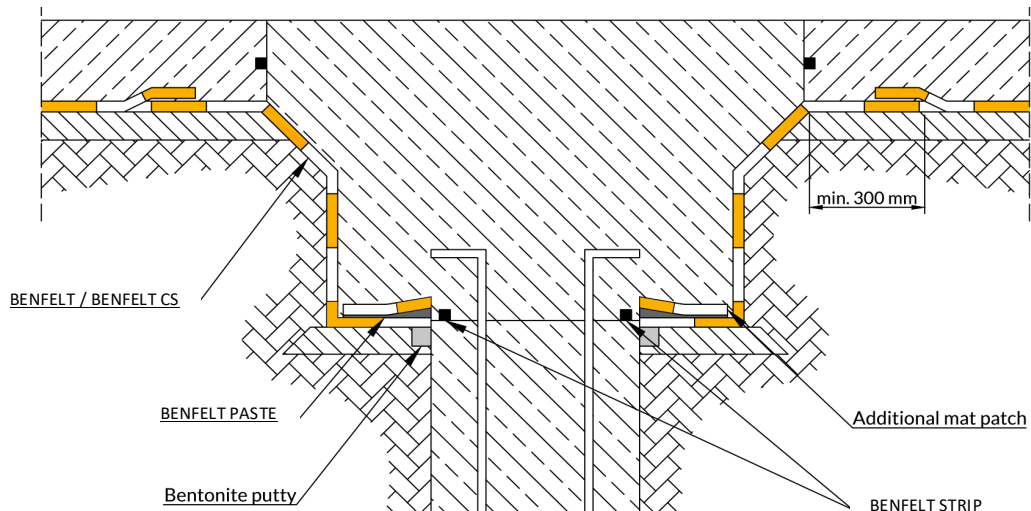
### Foundation board rib insulation



Notes:  
Details shown are typical illustrations only and not working drawings.

On top of the pile, around the protruding reinforcement, set a continuous stripe of BENFELT STRIP.

### Detail of pile cap insulation

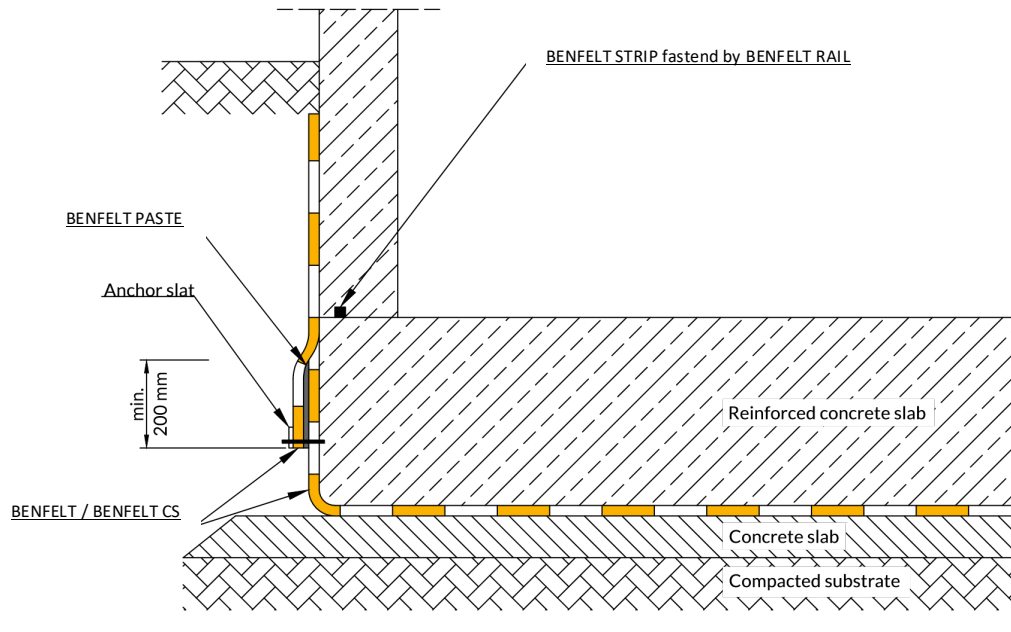


Notes:  
Details shown are typical illustrations only and not working drawings.

BENFELT GCL does not provide sealing of the expansion joint breaks. All construction joints in concrete works must be secured with BENFELT STRIP.



## Methods of passage from horizontal to vertical insulation – Variant I



Notes:  
Details shown are typical illustrations only and not working drawings.

In the connection spots of the board and wall, along the entire circumference, install BENFELT STRIP bentonite tape. It is admissible to use additional external sealing tape.

From these examples, it is clear that BENFELT STRIP is used in many finishing applications to make structures watertight. It is an indispensable part of the waterproofing system on any construction site. Contact BENFELT to develop other applications for BENFELT STRIP.

Notes and additional information:

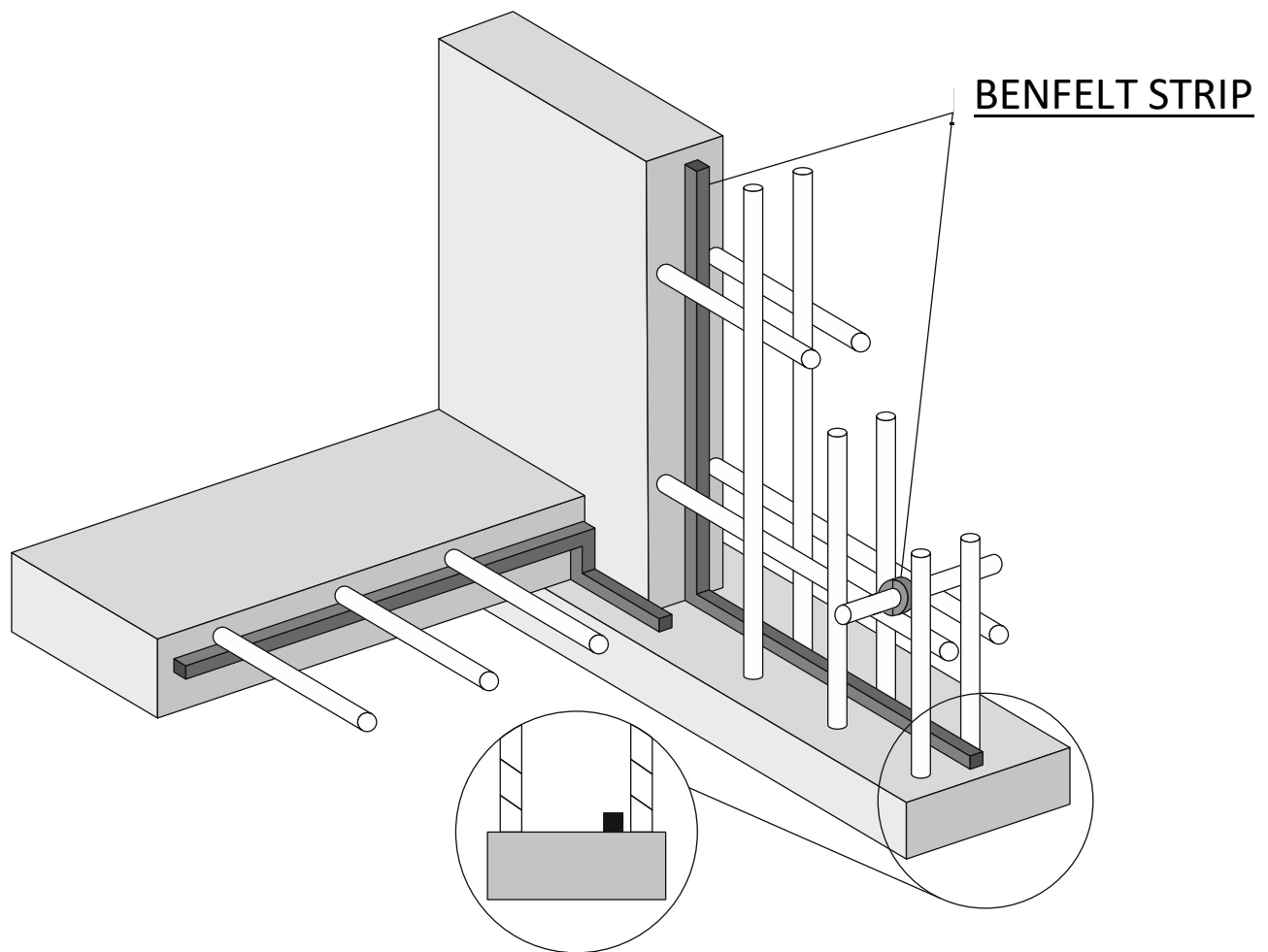
- BENFELT STRIP tapes are laid by joining successive sections to butt - do not overlap them, ·
- Hydrostatic pressure does not affect the proper performance of BENFELT STRIP in concrete joints.



Side view of BENFELT STRIP fixed to the subgrade with BENFELT RAIL.







The above drawing presents typical application of BENFELT STRIP in reinforced concrete construction.

Product shall be placed on the inner side of the outermost reinforcing bars.

In vertical and overhead applications BENFELT STRIP shall be well pressed to the surface to ensure proper adhesion.

For structural and pipe penetrations, the product should be cut into strips to fit around the conduit installation passage.

After applying BENFELT STRIP it shall be fixed with BENFELT RAIL and concrete nails.



Geofelt GmbH Rainerstraße 14 4020 Linz/Austria	TECHNICAL DATA SHEET				
BENFELT STRIP					
Composition	Natural sodium bentonite Highly molecular polyisobutylen PIB caoutchoc Filler of SiO <sub>2</sub> Filler of CaO Oil Special none toxicological admixtures <i>The raw materials are not toxicological and not unhealthy</i>				
Ignition point	Above 500°C				
Density	1689,81 kg/m³ = 1,69 kg/dm³ = 1,69 g/cm³ (ICAO standard)				
Stability & Reactivity	Swellable in water and any liquid medium Very good stability from 5°C up to 100°C Maximum temperature -5°C up to above 100°C <i>Dimensionary extremely stable, not sticky, not even under conditions of high temperature in summer</i>				
Packaging	Size	Colour	Length	Packaging/Carton	Carton/Pallet
	(20 x 25) mm	Black	5 m	6 pieces	30 cartons = 900 m
Handling & Storage	Beware of water, rain. Store the BENFELT STRIPS in a heated room when temperature is below +5°C				
Safety	<ul style="list-style-type: none"><li>· BENFELT STRIP is not poisonous, not toxically, not unhealthy, no danger or risk for the nature,</li><li>· Do not eat BENFELT STRIP, pay attention with eye contact.</li></ul>				

