

## BENFELT PASTE

### Product description

Bonding and sealing product manufactured on the base of bentonite; swelling clay containing anio-active detergent as an emulsifier. The outstanding feature of this product is a high elastic adhesive power. Thanks to its chemical composition it has a power to expand at contact with water up to 90 % of its volume.

BENFELT PASTE is a plastic and easy to use bentonite paste especially created for structural waterproofing. It consists of two complementary components:

- Sodium bentonite with very good sorption features and selected additives,
- Biologically harmless, paste-like, weather-resistant, solvent-free, and frost-resistant special wax with a very good adhesion capability to concrete.



### Basic use

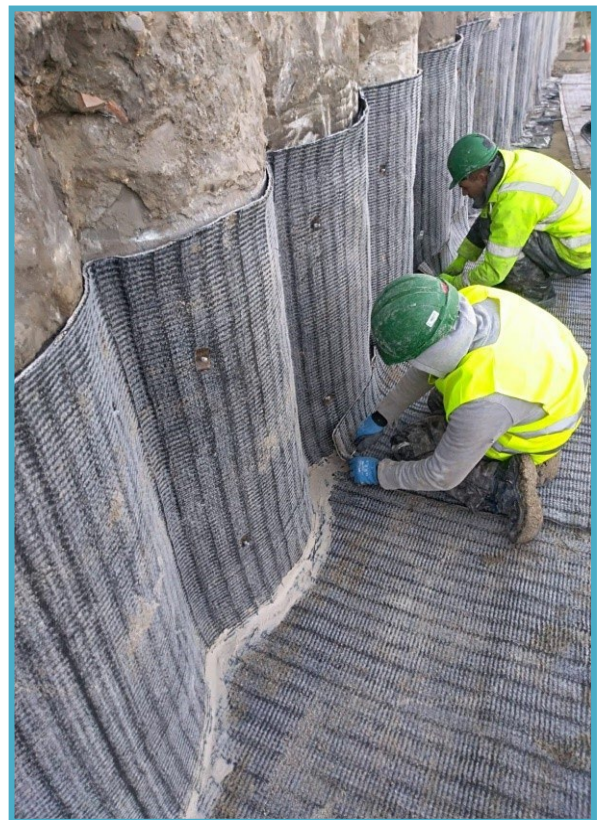
BENFELT PASTE eliminates unevenness of the bed and ensures perfect contact with the concrete surface and the sealing strip BENFELT STRIP.

It is used for:

- gluing the sealing strips BENFELT STRIP in daywork joints and dividing gaps,
- sealing the overlap of BENFELT bentonite mats and geotextiles,
- sealing of cable and pipe penetrations,
- filling cavities and other cracks in the building, engineering and water structures.

### Directions for use

BENFELT PASTE is applied directly on the surface contacts with the help of the spatula or extrusion / pushing gun from the cartouche. The bed on which BENFELT PASTE is applied must be dry (or only slightly damp) and free of dust and greasy impurities.



BENFELT PASTE is not combustible and toxic during storage and processing. The temperature of storage and processing ranges from +1°C to 30°C.

## Fields of application

BENFELT PASTE is used in civil engineering sector for sealing and protection of concrete areas in direct contact with soil. It is used to seal pipes, shafts, penetrations, voids, and honeycombs of concrete construction parts. BENFELT PASTE is the ideal product when using bentonite mats for structural waterproofing.

BENFELT PASTE is:

- environmentally friendly,
- extremely resistant,
- easy to install.

BENFELT PASTE has got:

- a high density,
- a controlled quality,
- extremely effective sealing properties.



## Application

The bentonite contained in BENFELT PASTE reacts with the penetrating water and the bentonite in the paste swells. Created pressure seals perfectly the place of application. Even cracks in the concrete structure are well sealed.



## Underground

All firm and load bearing subgrades are suitable (preferably binding concrete). Cracks > 1 mm and/or irregularities of surface > 1 mm can also be sealed permanently with BENFELT PASTE.





Quick and easy installation, regardless of temperature and weather conditions, even in cold seasons



Quality control tests of sodium bentonite, additives and special wax ensure consistent high quality



Self-healing ability of bentonite stops water flow into concrete structure



Sealing of shrinking cracks in concrete structure by swelling pressure of bentonite



Good adhesion to concrete due to latest production technology



High density





|  |  |  |   |                           |                       |
|--|--|--|---|---------------------------|-----------------------|
| Geofelt GmbH<br>Rainerstraße 14<br>4020 Linz/Austria |  | TECHNICAL DATA SHEET   |   |                           |                       |
| BENFELT PASTE  |  |  |   |                           |                       |
| Technical feature of<br>BENFELT PASTE                | Water content DIN 18121                              |  | w   | 10 + 2                    | %                     |
|  | Specific density DIN 18124                           |  | ps  | 2,65                      | g / ciTr <sup>3</sup> |
|  | Bulk density   |  |   | 800                       | g / l                 |
|  | Dry screen residue on sieve<br>0,063 mm DIN 53734    |  |   | 20 + 5                    | %                     |
|  | Methylene blue adsorption VDG<br>P69                 |  |   | 360 + 30                  | mg / g                |
|  | Cation exchange capacity                             |  | CE C  | 80 + 10                   | mval / 100 g          |
|  | Water adsorption Enslin-Neff,<br>after 24h DIN 18132 |  | wA  | > 500                     | %                     |
|  | Swelling volume                                      |  | > 25  | ml / 2 g                  |                       |
|  | Liquid limit DIN 18122                               |  | wL 450  |                           | %                     |
|  | Plastic limit DIN 18122                              |  | wP 45   |                           | %                     |
|  | Plasticity index (calculated)                        |  | lp  | 405                       | %                     |
|  | Density  |  |   | 1,95 kg / dm <sup>3</sup> |                       |
|  | Flashpoint   |  |   | > 250 °C                  |                       |
|  | Colour   |  |   | yellow / brown            |                       |
|  | Application temperature                              |  |   | (-5) - (+40)              |                       |
|  | Consistency  |  | Soft-plastic to firm depending on temperature |                           |                       |
| Delivery & Storage                                   |  | Bucket a 25 kg leak-proof. 24 buckets on pallet - 625 kg.<br><br>Keep BENFELT PASTE dry, frost-free and protect against heat.<br>Shelf life is unlimited. Stir briefly before use! |   |                           |                       |

