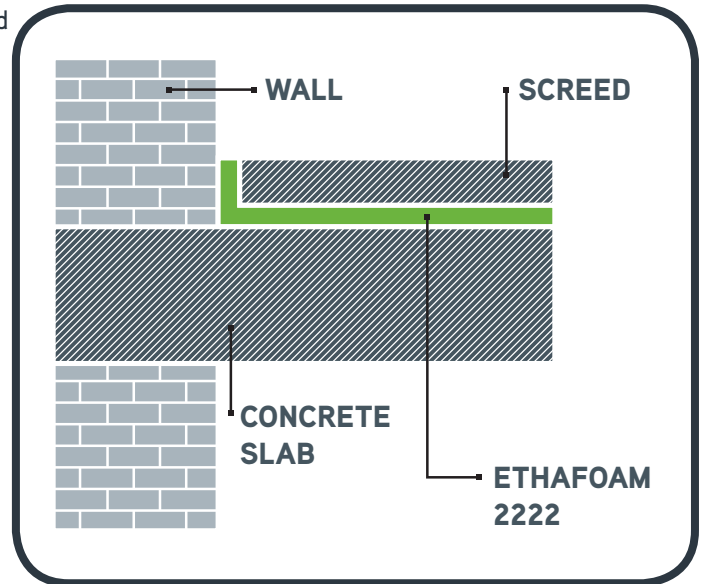


Ethafoam® 2222 is a closed-cell polyethylene foam material designed for use as a resilient acoustic insulation layer in concrete floor structures.

**KEY BENEFITS INCLUDE:**

- Superior impact sound insulation – conforms to European Building Standards. Ethafoam 2222 has the Technical Approval : ITB-KOT-2017/0328 edition 1.
- Minimal moisture retention – closed-cell structure allows use in humid environments.
- Lightweight – easy to install.
- Low profile installation – minimal increase in floor height.
- Ageing resistant – formulated to withstand degradation caused by alkaline in concrete floors.
- Highly resilient – withstands the rigours of an on-site environment.
- Versatile – can be installed as single or multiple layers dependent on space and performance requirement.



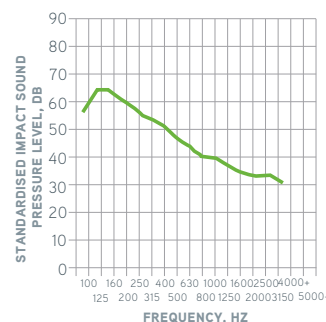
PHYSICAL PROPERTIES	TEST METHOD	UNITS	VALUE
Thickness	EN 823	mm	5 and 10
Compressive strength	ISO 3386	kPa	> 20
25% 4th Compression			> 70
50% 4th Compression			< 1
Short term compressibility	EN 12431	mm	
Density	ISO 845 / EN 1602	Kg/m <sup>3</sup>	33
Impact sound insulation	EN ISO 140-7 EN ISO 10140-3:2010	L'nT,w (dB) ΔL <sub>w</sub> (dB)	52 20 for 5mm , 23 for 10mm
Airborne sound insulation	EN ISO 140-4	DnT,w + Ctr (dB)	48
Thermal conductivity	ISO8301	W/mK	0.04
Dynamic stiffness	EN29052-1 / ISO9052-1	MN/m <sup>3</sup>	> 50
Ageing resistance	SP0414 / ISO1798	years	50
Water absorption (After 28 days)	EN 12087	volume %	< 2

**IMPACT SOUND TEST RESULTS**

TEST METHOD	UNITS	VALUE
En ISO 140-7: 1998	L'nT,w (dB)	52

\* Criteria to pass test is less than 60 dB

**IMPACT SOUND INSULATION**



**SRL** Sound Research Laboratories Limited

Sound Research Laboratories Limited  
holbrook House,  
Little Waldingfield Sudbury,  
Suffolk CO10 OTH Test Report No.  
C/07/51/3922/R03

We warrant that Ethafoam 2222 foam will meet our product specifications and will be free from material defects in manufacturing for a period of 90 days from shipment. You agree that our liability under this warranty for any materials sold or delayed in shipment or not shipped, is limited, at our option (a) to repayment, or if not paid, to credit of the purchase price (b) to replacement or (c) to repair and that we shall in no event be liable for general, special, incidental indirect, consequential, punitive or penal damages. The user should test the application to determine the suitability of Ethafoam 2222 foam for the intended use. There are no warranties or representations of any kind, express or implied, including any warranties of fitness for a particular purpose or merchantability, except the foregoing express warranties and none shall be implied by law. All warranties, express and implied, are excluded when the material is sold "as is".