

# MasterLife WP 1000

Self-healing, integral crystalline waterproofing admixture in powder for durable concrete.

## MATERIAL DESCRIPTION

MasterLife WP 1000 is a specific integral crystalline waterproofing admix to be added to the concrete mix, to impart waterproofing properties due to active chemicals that react with the moisture in fresh concrete to generate a non-soluble crystalline formation throughout the capillary pores of cement matrix.

MasterLife WP 1000 consists of Portland cement, selected filler and fine sand and various active, proprietary chemicals that react with water and moisture higher than 95% closing and sealing capillary porosity and micro-cracks lower than 0,4 mm.

The use of MasterLife WP 1000 is advised where a waterproof concrete is required, durable to deterioration due to harsh environmental conditions that resists to hydrostatic pressure from either positive or negative surface of the concrete slabs.

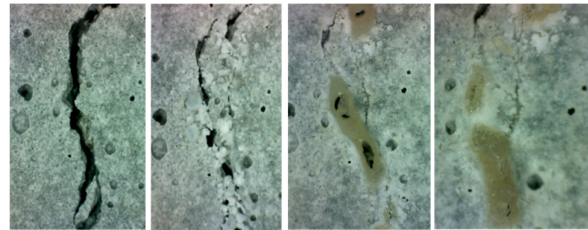
## FIELDS OF APPLICATION

The use of MasterLife WP 1000 is recommended in the following applications:

- reservoirs of potable and non potable water
- swimming pools
- underwater structures
- depurators
- foundation work, slabs and retaining walls
- residential and non residential parking structures
- dams and dykes
- harbors and docks
- sewers, tunnels and canals
- tunnels and subway systems

## FEATURES AND BENEFITS

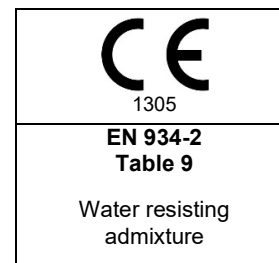
MasterLife WP 1000 becomes an integral part of the cement matrix giving waterproofing properties to concrete, thanks to a crystalline formation throughout the capillary pores. Reaction proceeds in water since the early stages from 7 to 28 days and on, with the closing and sealing of micro-cracks, reducing permeability and improving the durability of concrete.



Fessurazione iniziale      7 giorni      28 giorni      60 giorni  
 Trattamento in acqua

*Self healing properties of MasterLife WP 1000 during time, in water.*

In compliance with the European Regulation (EU No 305/2011 and EU No. 574/2014) the product is provided with the CE marking according to UNI EN 934-2 and the relative DoP (Declaration of Performance).



## DOSAGE

The dosage of MasterLife WP 1000 can range from 1 to 2 kg by weight of cement.

Other dosages may be recommended in special cases according to specific job site conditions.

In such cases please consult our Technical Service Department for advice.

## PACKAGING

MasterLife WP 1000 is available in 20 kg bags.

## STORAGE

Store the product in a dry and sheltered place. Do not use the product if bag is damaged.

If stored in unopened bags the shelf life is 18 months.

# MasterLife WP 1000

Self-healing, integral crystalline waterproofing admixture in powder for durable concrete.

Technical Information	
Form	Grey powder
Bulk Density (g/cm <sup>3</sup> )	1.025 – 1.225
Uncompacted Bulk Density (g/cm <sup>3</sup> )	0.670 – 0.870
Essential characteristic in accordance to EN 934-2	Performance
Chloride ion content	≤ 0,1% by mass
Alkali content (Na <sub>2</sub> O equivalent)	≤ 15,0%
Corrosion behaviour	Contains only components from EN 934-1 2008 Annex 1
Compressive strength	28 days ≥ 85%
Air content	≤ 2%
Capillary absorption	7 days curing, 7 days tested ≤ 50% 90 days curing, 28 days tested ≤ 60%

## DIRECTIONS FOR USE

MasterLife WP 1000 can be loaded preferably during the aggregates load on the loading belt in the ready-mix plant. We advise to mix for 5 min. in order to assure a homogeneous concrete. Avoid the addition on premixed-wet concrete.

## COMPATIBILITY

**MasterLife WP 1000 is compatible with all admixtures of MasterPozzolith, MasterRheobuild and MasterGlenium series.**

## SAFETY INSTRUCTION

It is recommended that gloves be worn when using the product. For information on the correct and safe use, transport, storage and disposal of the product, consult the most recent Safety Data Sheet.

## OTHER SERVICES

For price analysis, specifications, supplementary brochures, references, reports and technical assistance, visit the website [www.master-builders-solutions.com/it-it](http://www.master-builders-solutions.com/it-it) or contact [infomac@mbcc-group.com](mailto:infomac@mbcc-group.com).

Scan the QR code to visit the product page and download the latest version of this datasheet.



# MasterLife WP 1000

---

Self-healing, integral crystalline waterproofing admixture in powder for durable concrete.

---

Since 16/12/1992, Master Builders Solutions Italia Spa has been operating under a Certified Quality System compliant with the UNI EN ISO 9001 Standard. Furthermore, the Environmental Management System is certified according to the UNI EN ISO 14001 Standard and the Safety Management System is certified according to the UNI ISO 45001 Standard.

**Master Builders Solutions Italia Spa**

Via Vicinale delle Corti, 21 – 31100 Treviso – Italia  
T +39 0422 429200 F +39 0422 421802  
[www.master-builders-solutions.com/it-it](http://www.master-builders-solutions.com/it-it)  
e-mail: [infomac@mbcc-group.com](mailto:infomac@mbcc-group.com)

For further information, please consult the local Technician of Master Builders Solutions. The technical advice on how to use our products, either written or verbally given, are based on the current state of our scientific and practical expertise, and does not imply the assumption of any guarantee and/or responsibility for the final results of works executed using our products.

Therefore, the customer is not exempted from the exclusive task and responsibility of verifying the suitability of our products for the intended use and purposes.

This version supersedes all the previous ones.